

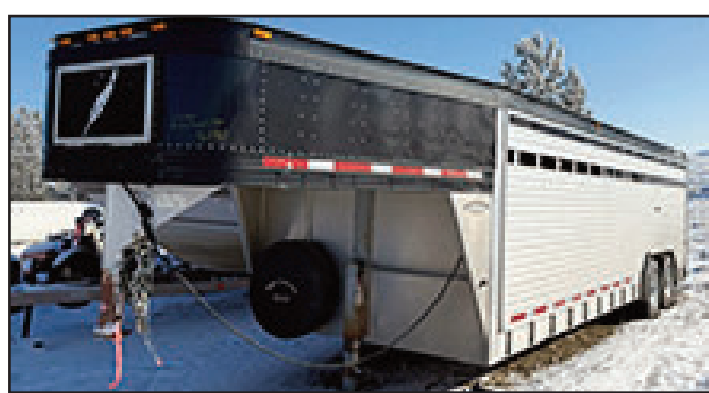
LIVE AUCTION

SHARKEY WELL SERVICE

LIVE AUCTION

AUCTION

SATURDAY, JANUARY 25th, 2025 @ 10:02 AM 100 ROCK RD. • GILLETTE, WY 82718

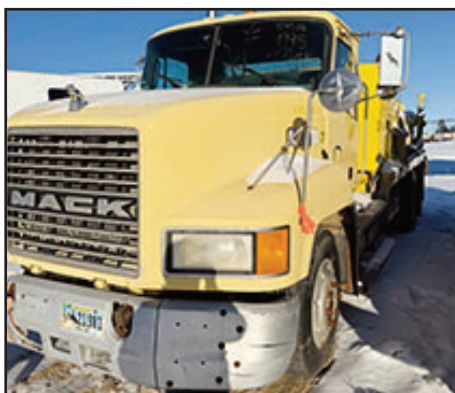


AUCTIONEERS NOTE: THIS IS A COURT ORDERED SALE TO LIQUIDATE THE INVENTORY OF SHARKEY WELL SVC., WE WILL BE ON SITE THURSDAY THE 23rd & FRIDAY THE 24th FROM 10:00 TO 4:00 PM. FOR INSPECTION. MANY OF THE VEHICLES ARE NOT RUNNING, SOME MAY BE MISSING TIRES AND ALL WILL BE SOLD AS IS/WHERE IS WITHOUT WARRANTY. THESE ITEMS WILL NEED TO BE REMOVED WITHIN 10 DAYS OF THE DATE OF SALE, WE WILL HAVE EQUIPMENT ONSITE TO ASSIST IN LOADOUT BUT LARGER ITEMS WILL REQUIRE A WINCH TRUCK OR ANOTHER FORM OF REMOVAL. THIS IS A COURT ORDERED SALE AND ALL ITEMS ARE SUBJECT TO THE COURT BUT WILL BE SOLD AS IS/WHERE IS WITH NO WARRANTY. ANY VEHICLES WITH LIENS WILL BE CLEARED PRIOR TO MAILING OF ANY TITLES.

DIRECTIONS: FROM I-90 TAKE WY-50 (EXIT 124) AND HEAD SOUTH 3 1/2 MILES, TURN RIGHT (WEST) ON ROCK RD AND GO 1/2 MILE TO THE TOP OF THE HILL AND TURN LEFT, GO STRAIGHT 1/3 MILE TO AUCTION SITE AND GO LEFT TOWARDS HOUSE AND REGISTRATION TRAILER. THE AUCTION WILL START AT THE TOP OF THE HILL AND WHEN FINISHED AT THE TOP OF THE HILL WE WILL TAKE 1/2 HR AS EVERYONE MAKES THEIR WAY TO THE LOWER YARD. WATCH FOR SIGNS!!!!!!!!!!!!!!!!!!!!

1981 CRACA WORKOVER RIG - 1970'S WORKOVER RIG - 2013 HOMEMADE PIPE STACK OUT TRAILER W/PIPE RACKS & PIPE PULLER - 1995 MACK CEMENT PUMP TRUCK - 1997 DOWNHOLE CEMENT TRUCK - 1991 VOLVO VAC TRUCK - 2006 CHEVY 6500 TOOL TRUCK - 2002 CHEVY 6500 FLBD TRUCK - 1995 CHEVY 6500 FLBD TRUCK - 1985 CHEVY SVC TRUCK - 2011 FORD F-350 (WRECKED) - 2010 F-350 (WRECKED) - 1999 FORD F-350 (WRECKED) FLATBED - 2007 F-550 (NOT RUNNING) - 2006 FORD F-350 (NOT RUNNING) - 1994 LINCOLN LIMO (NOT RUNNING) - 1997 LINCOLN LIMO (NOT RUNNING) - 2017 FORD F-350 (WRECKED) - 2004 FREIGHTLINER W/AUTO-CRANE (NEEDS TIRES) - 1992 CHEVY 6500 FLBD - 2008 TRACKER 12FT FISHING BOAT & TRAILER - 2006 FEATHERLITE (24FT) HORSE TRAILER - 1985 FRUEHAFF TANKER TRAILER - HOMEMADE FLOAT TRAILER - POWER SWIVEL HEAD ON TRAILER - MAXI HEAT TRAILER - ALLMAND ML20 LIGHT PLANT TRAILER - ALLMAND MAXI-LITE (NO TIRES) - SMALLER LIGHT PLANT - TEREX LIGHT PLANT - FLBD TRAILER WITH LG. MILLER WELDER (NOT RUNNING) - 2007 MAG HEAT (XE 1500D) TRAILER - 1999 WESTERN PRO 24FT GOOSENECK W/DOVETAILS - 1991 DOUBLE DIAMOND GOOSENECK TRAILER (TRIPLE AXLE) - 1999 WESTERN PRO 24FT GOOSENECK TRAILER - SMALL HMDE TANDEM AXLE TRAILER W/SIDES - 2015 SPIRIT ENCLOSED DOG HOUSE TRAILER - 2005 PACAM DOG HOUSE TRAILER - SPOOL TRAILER - FLBD TOOL TRAILER W/SIDEBORDS - 2005 DUOLITE (1000 GAL) TANK TRAILER - FRAC TANKS - (6) INSULATED OILFILED WATER TANKS ON SKIDS (5000 GALS?) - 1992 GOOSENECK TRAILER (NO TIRES) - (3) 20 FT CONEX SHIPPING CONTAINERS - (2) 40FT CONEX SHIPPING CONTAINERS - (5) DOG HOUSES ON SKIDS - 1985 HAYN DOG HOUSE TRAILER - ORANGE DOG HOUSE TRAILER - (2) MUD PUMP DOG HOUSES W/SERIES 60 MOTORS & PUMP - SKIDS - HOSE - SPOOLS OF CABLE - HD PIPE STEEL SHELVING - FUEL TRANSFER TANKS - (8) BARREL CHEMICAL CONTAINMENT UNITS - OIL TREATERS - OIL TANKS - STEEL PLATFORM SKIDS - LG. ASST. OF MISC. SUCKER ROD - 100+ JOINTS OF 2 7/8" PIPE - 100 + JOINTS OF 2 3/8" PIPE - (2) LG. SETS OF PIPE RACKS - LG. STEEL RAISED DECK - ALUMINUM STAIRS - STEEL STAIRS - PLASTIC BARRELS - STEEL DRUMS - CHAIN RACK W/TIRE CHAINS - (3) DETROIT SERIES 60 MOTORS - PUMPS - STEEL BENCHES - LIFTING CABLES - TOOL BOXES - TRAVELING BLOCKS FOR WORKOVERS - MISC. TOOLS

MORE PHOTOS ON BACK PAGE



FOR MORE INFORMATION PLEASE CONTACT JUSTIN 307.660.2292

TERMS: Cash or Check with picture ID. We also take Credit Card Payments with a 3% Transaction Fee. All items sold as is - where is - not responsible for accidents or theft. Announcements made the day of the auction, take precedence over all printed materials. Sales Tax collected. **FOR FULL LISTING GO TO AUCTIONZIP.COM ID #27765**



Sale Conducted By:

BIESHEUVEL AUCTION & APPRAISAL

Auctioneer: Justin Biesheuvel • 307.660.2292

