

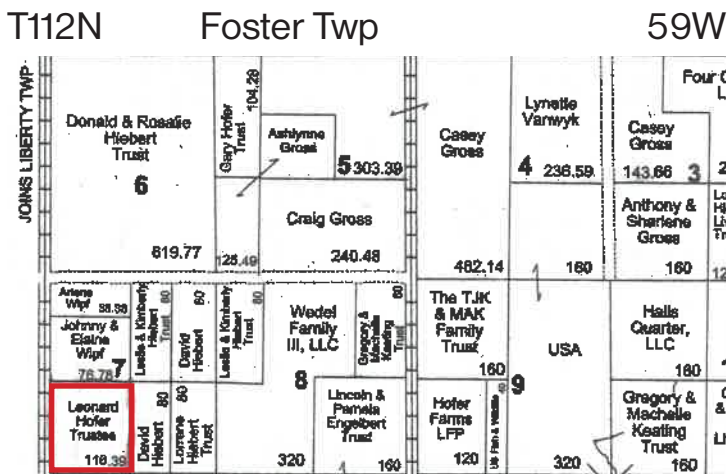
Beadle County Land At LIVE AUCTION

Friday, Oct. 11th, 2024 at 10:30am

On Location At Tract 1

Tract 1 Directions:

From Hwy 14 and Yale Road Jct,
10 miles North on 411th Ave.
then 1 mile East on 198th St.



Tract No. 1:

SW 1/4 of Section 7 - T112N-R59W,
Foster Twp, Beadle County, South Dakota.

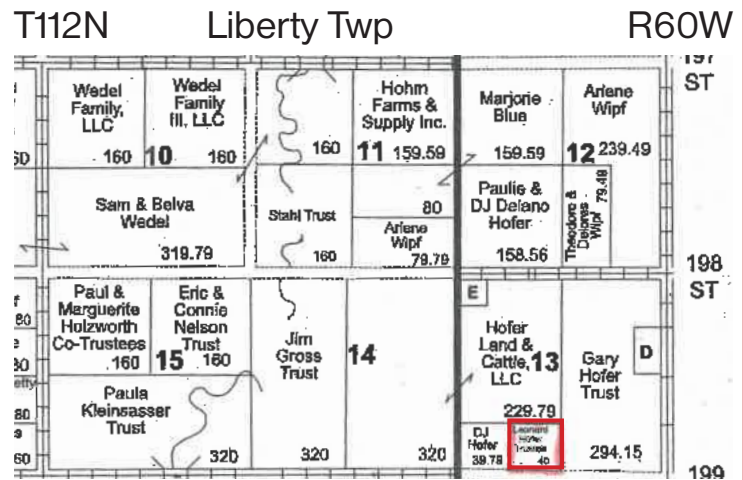
116.39 acres. FSA records show
112.72 acres tillable. Soils are mostly
Beadle-Dudley complex (BdA) with a
productivity rating of 58.

Taxes are: \$1,291.72

Tract 2 Directions:

From Hwy 14 and Yale Road Jct,
9 miles North on 411th Ave.
then 1/2 mile East on 199th St.

(country road)



Tract No. 2:

SE 1/4 of the SW 1/4 of Section 13 - T112-R60W,
Liberty Twp, Beadle County, South Dakota.

40 acres. FSA records show 34.60 acres
cropland and 5.40 acres grass.

Property is currently all grassland.

Taxes are: \$755.48

Terms of sale: 15% DOWN day of sale (non-refundable). Title insurance and closing cost split 50/50 by buyer and seller, to be closed at Huron Title on or before December 15, 2024. No buyer's premium. Seller reserves the right to reject any or all bids. Auctioneer is agent of seller. All verbal words at auction take precedence over any written material. For showing or more information call Steve Sprecher at 605-350-2157.

Owner: Leonard Hofer Trust

Steve Sprecher
Broker/Auctioneer
RE #4609



605-350-2157
www.sdauctions.com
www.acerealty.net

2297 Kansas Ave SE • Suite #2 • Huron, SD